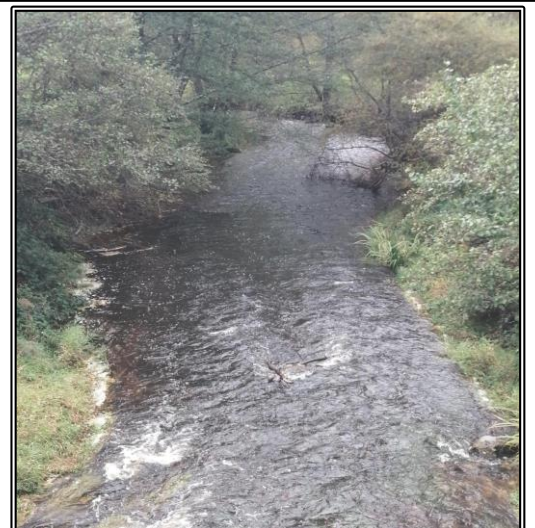
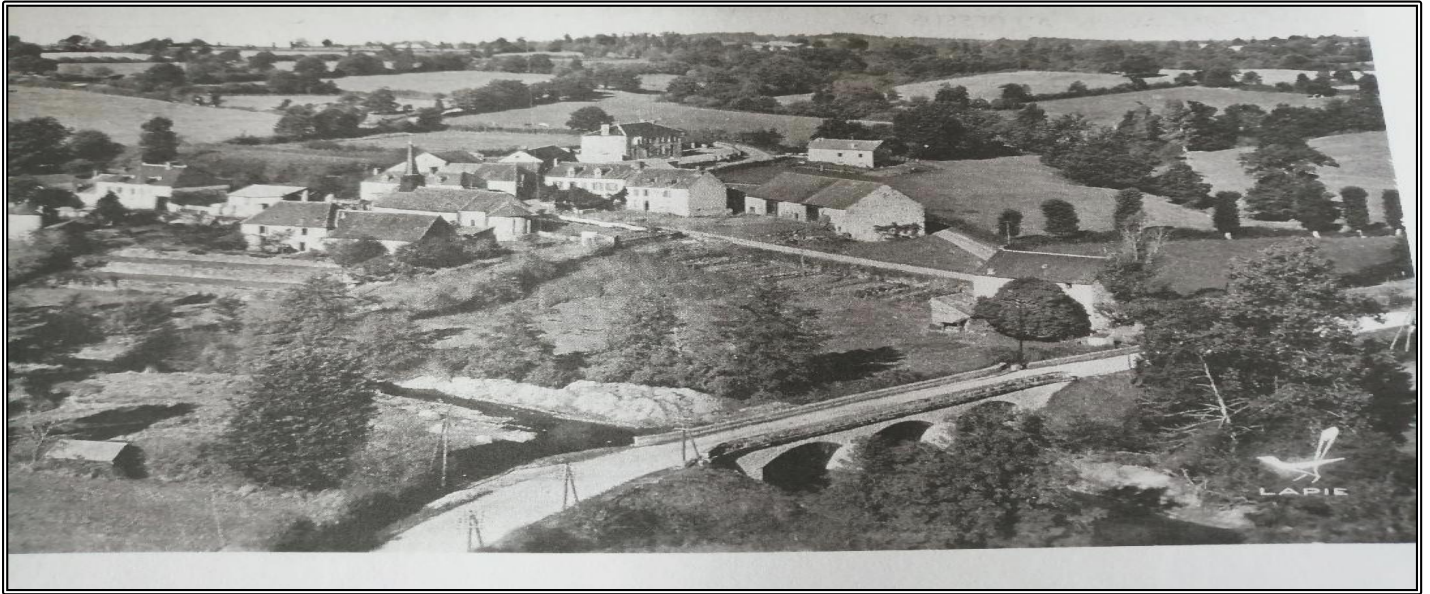


Welcome handbook for newcomers



Mairie de Malleret Boussac

9 le bourg 23600 Malleret Boussac
05 55 65 06 22
mairie.malleret-boussac@wanadoo.fr



Opening hours: Tuesday 2-6 p.m. / Thursday 10 a.m. - noon / Friday 2-4.30 p.m.



A word from the Mayor

You are at home, Welcome !

You have just settled in Malleret-Boussac. This welcome handbook will help you to get acquainted with your new town council. You will find in it useful information about your everyday life in the village, but also in our district (useful phone numbers, education, tourism...). Town councillors are at your service to answer your questions. You can also get more information in reading the local news sheet.

Life is pleasant in Malleret-Boussac !

The country village offers fine viewpoints, lots of small rivers and wooded areas ideal for outdoor leisure activities. The main economic activity is of course agriculture and most people make their living on farming. They contribute to the maintenance of our environment and shape our landscapes. I hope you will quickly have the opportunity to get to know the locals, maybe through our associations "la Gerbaude" which organizes festive annual meetings, and the communal shooting society. We rely on you to bring your ideas to widen the range of activities already on offer. Don't hesitate to contact us for further information.

We wish you a long and pleasant stay in Malleret-Boussac !

Yours sincerely,
The Mayor Wladimir Lasareff

A History resumé

Malleret-Boussac takes its name after a fruit tree, either a medlar from the Occitan *melier* or an apple-orchard from the latin term *malum*. Malleret-Boussac (300 m high and 25,58 sq kms) is a french village located in the Creuse department in the Nouvelle Aquitaine region, formerly the Limousin region. The inhabitants, approximately 200 in 2020 are called Malleretois et Malleretoises. The river « petite Creuse » a tributary of the main river « la Creuse » flows through the village.

This parish used to belong to the former province of Berry. It was attached to the department of « la Creuse » when it was created in 1790. The names of the parish and then of the village evolved and changed over the centuries.

- capellanus (=chapel) de Mallareys in 14th century
- parish of Malareys in 1462
- Malaret in 1625
- parish of Maleraix in 1698
- Mallereix in the 18th century
- Malreix in 1793
- Malleret in 1801
- Malleret-Boussac in 1911 : -Boussac was added not to mistake it from its namesake in the south of the department Creuse and to underline it is close to Boussac.

The « Bonne Font », a miraculous fountain located at the place called « le Petit Chaumeix », the 12th century Roman church (listed) Champeix chapel are touristic sites worth visiting.



Local life and services

English speaking people : If you meet problems to fill forms for the French administration, do not hesitate to contact the town hall where people will be happy to help you.

Administrative : Guéret (35 kms), prefecture : 05 55 51 59 00 / www.creuse.gouv.fr
Aubusson (48 kms), sub-prefecture

Associative : During the second world war Malleret-Boussac's inhabitants gathered together to send food parcels to the war prisoners. In 1945 they went on and launched the association « la Gerbaude » they organised stage performances to raise money to pay for the food parcels. Nowadays the association arranges meals and outings based on a topic for the members to create links between people. Contact : M. Henri Vangeon (Président) 07 45 04 42 26

Education : Malleret Boussac is included in Boussac school district. The children are welcome from kindergarten to secondary school (4th form).

For nursery and primary school children must be registered at Boussac town hall : 05 55 65 01 09
As for the secondary school « Henri Judet » please call : 05 55 65 40 30

Micro-nursery : « crech'n do » welcomes children from 10 weeks to 3 years old. Open from 7.45 am to 6.15 pm Le Montet 05 55 82 34 53.

Child minders : There are none in the village itself but some in the nearby villages. For inquiries contact the UTAS (territorial unit of social action) 05 87 80 90 90.

Health/medical services : The following healthcare professionals can be found in Boussac :

- general practitioners, private nurses, dentist, physiotherapists, osteopath, dietetician, chiropodist/podiatrist, psychologist
 - chimists
 - A home support service association « Agardom » which offices are located in Aubusson.
- Somebody is on call in Boussac 05 55 65 89 28
- A nursing home

Recycling centre : located in Saint Silvain Bas le Roc 05 55 65 87 91, free access is provided to all residents from the group « Creuse Confluence ».

Opening hours september to april : tuesdays, wednesdays, fridays 9.00 am to 12.00 am Saturdays 9.00 am to 12.00 am and 1.30 pm to 5.00 pm

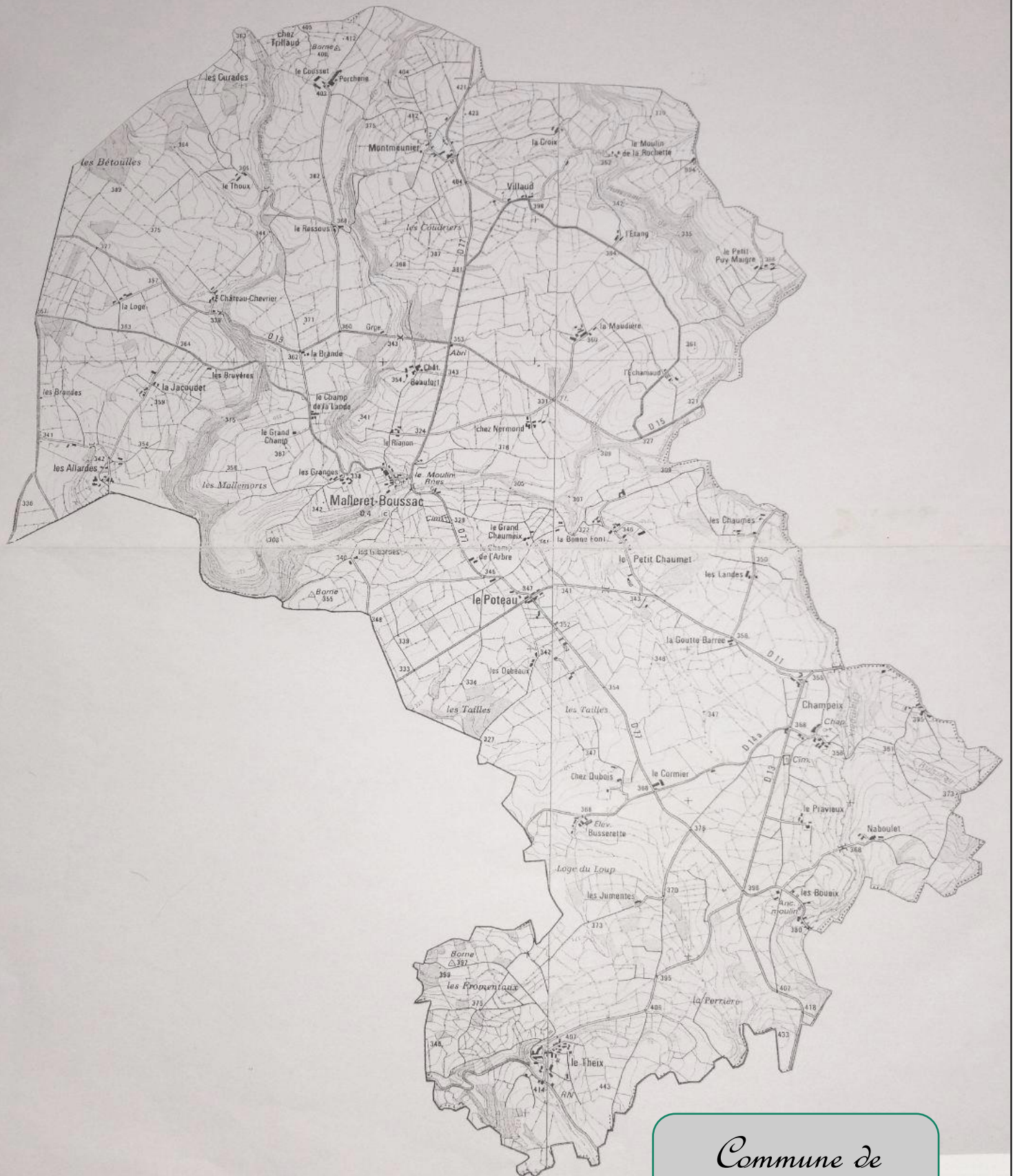
Opening hours may to august : tuesdays, wednesdays, fridays 8.30 am to 12.30 am and Saturdays de 8.30 am to 12.30 am and 1.30 pm à 5.00 pm

Shops in Boussac are listed below :

Supermarkets, shop of local producers and crafts, drive of local producers, butcher's shops, wine merchant, bakers shops, several restaurants, bars, fast-food, pizzeria, home made sandwich shop...

Services in Boussac as listed below : Notary, real estate agents, beautician, veterinaries, insurance companies, mechanics, hairdressers...

Malleret-Boussac



Commune de
Malleret-Boussac

Our surroundings

Boussac tourist office is open as follows :

Off-season : Tuesdays and Saturdays from 9.00 am to 12.00 am and Wednesdays, Thursdays and Fridays from 9.00 am to 12.00 am and from 2.00 pm to 5.45 pm

July and August : From Tuesdays to Saturdays from 9.30 am to 12.30 am and from 2.30 pm to 6.00 pm, on public holidays from 9.30 am to 12.30 am.

www.tourisme-creuse.com

Place de l'hôtel de ville 23600 Boussac

05 55 65 05 95

On leaving Malleret-Boussac you can visit several interesting places or simply take a walk enjoying the calm of the surrounding countryside.

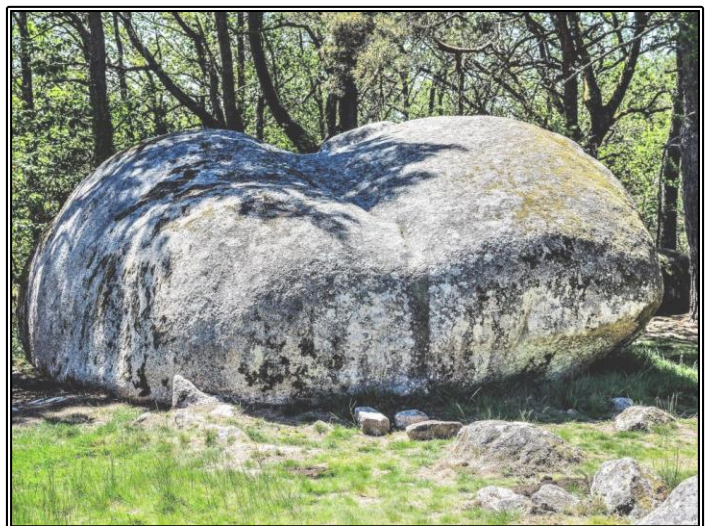
Boussac : (6kms)

- Boussac castle : a castle of the 12th century. Open every day from Easter to All Saints' day from 9.00 am to 12.00 am and from 2.00 pm to 6.00 pm. Guided tours only
- Walk along the old streets.
- Market Every Thursday morning with its local producers.



Toulx Sainte croix : (11 kms)

- Saint Martial's church which bell tower stands apart.
- The tower offering a 360° panoramic view looking over 7 departments.
- Les pierres Jaumâtres, a listed site made of about 40 huge granite blocks.



Chambon sur Voueize (33 kms)

- Sainte Valérie's Abbey
- Ramble through the old streets and gorges of the Voueize where you may be lucky to meet an otter !



Evaux les bains : (38 kms)

- Spa resort
- Casino



and also, Prébenoît Abbey in Bétête (7 kms), the headquarters of the Templars in Lavaufanche (12 kms) (picture below : a winter morning), the pond of « des Landes » in Lussat (28 kms), the castle of Villemonteix in Saint Pardoux les Cards (34 kms) the wolf park of Chabrières near Gueret (38 kms), Notre Dame d'Orsan Priory gardens in Maisonnais (46 kms), Aubusson tapestry (49 kms), Painter's valley and « la Sédelle » arboretum (54 kms) near Crozant...



Accommodation and catering

le Rianon : campsite, self-catering accomodation,
guest houses providing rooms and table d'hôtes
le Rianon in Malleret-Boussac
07 78 66 06 81 www.lerianon.com

Le Central : hotel *** restaurant
4 rue du 11 novembre à Boussac
05 55 665 00 11 www.hotelcentral-creuse.com

Château de la Creusette : luxury guest rooms and
table d'hôtes (open from mid-april to the end of october)
17 avenue d'Auvergne à Boussac
05 55 65 78 27 www.lacreusette.fr

La Bonne Auberge : hôtel 3* and restaurant
1 rue des lilas à Nouzerines
05 55 82 01 18 www.labonneauberge.net



Catering only

Café de la place : café restaurant
4 place de l'hôtel de ville à Boussac
05 55 65 02 70

Grand café des sports : café restaurant
26 place de l'hôtel de ville à Boussac
05 55 65 82 12

L'angle : Home made sandwitcherie
11 rue vincent à Boussac
06 49 74 25 86

Le Chalet des pierres Jaumâtres
2 les pierres Jaumâtres à Toulx Sainte Croix
05 55 65 43 11
www.lespierresjaumatres.fr



Campsites

Château de Poinsouze : Campsite ****
route de la Châtre à Boussac Bourg
05 55 65 02 21
www.camplng-de-poinsouze.com

Campsite Creuse Nature : Naturist campsite
route de Bétête
05 55 65 18 01
www.creuse-nature.com

Sports ans leisure

MOUNTAIN BIKE

Circuits from beginners to experts around Malleret-Boussac.
Circuit des pierres Jaumâtres : 2 hours starting from Toulx Sainte Croix.
Circuit looking for local heritage : 2 hours from Lavaufanche.
And many others...

www.tourisme-creuse.com

BICYCLE

Ideal for cyclists the department of Creuse provides 450 kms marked ans secured cycling routes.

The Véloroute Est, 168 kms, 4 sections, from Boussac to Vassivière lake through Chambon sur Voueize.

The scenic tour (n°23). A local circuit of 25 kms around Boussac.
www.tourisme-creuse.com

FISHING

With its 3400 kms of rivers and brooks of first and second categories the river Creuse is the privileged spot for fishermen.

The communal pond of Bétête.

La Prugne stretch of water in Châtelus Malvaleix.

www.tourisme-creuse.com

www.ecolepeche-petitecreuse.fr : in order to discover or improve your fishing techniques in fresh water.

HIKING/HORSE RIDING

The Chevrier trail : 8,7 kms long takes 2.30, easy, walk starts from Malleret-Boussac.

Trail du moulin : 8 kms long takes, 2.00, easy, walk starts from Bétête
and many more ...

www.tourisme-creuse.com

Quad treks start from Lavaufanche with « Roue libre 23 »
www.rouelibre23.com



You also find in Boussac :

- A leisure centre

www.creuseconfluence.com

- A cinema

www.boussac.fr

- A co-working/teleworking/business incubator : La Boutique

05 19 70 03 00 / laboutique@creuseconfluence.com

The municipal Community

Creuse Confluence

The municipal community « Creuse Confluence » is composed of 42 villages where 16 893 inhabitants live. It was started in 2017 following the merging of 3 municipal communities : « pays de Boussac » « carrefour des quatre provinces » and « Evaux les bains Chambon sur Voueize ».

Le Montet
23 600 Boussac Bourg

05 55 65 83 94
contact@creuseconfluence.com
www.creuseconfluence.com



it deals with :

- **Economy** : to strengthen the economic dynamic in order to boost the attractiveness of the area.
- **Spacial planning**
- **Tourism**
- **Prevention and managment of household waste and managment of water ressources**
- **Housing, health, solidarity**
- **Development of digital technology**
- **Childhood and youth**
- **Sport and culture**

Merci aux BTS du Lycée agricole de Bourges option DATR (developpement et animation des territoires ruraux) 2019-2021 sous la conduite de leur Professeur Madame Carole Pietrzack, mais également Madame Claire Ebel et Madame Pierrette Berthon.



Feedback !

We hope this handbook was useful and helpful, if you have other questions, do not hesitate to contact us.

You can also fill in the attached document and send it back to the town hall so that we can improve it.

My suggestions for improving the welcome handbook for newcomers :

Besides, the local news sheet of Malleret-Boussac was launched in 2021. Its aim is to inform the Malleretois and Malleretoises of the various happenings in the village. Your settling here is part of it. Therefore, do you agree to be introduced as a newcomer in the next local news sheet ?

Nom :

Surname :

Address:

Phone number :

E-mail :

☐ Yes, I do agree

☐ No, I don't

(if yes, we will contact you to discuss the precise content of your article with you)

MAIRIE DE MALLERET-BOUSSAC

9 le Bourg 23600

+33 5 55 65 06 22

mairie.malleret-boussac@wanadoo.fr